



BIOTOP

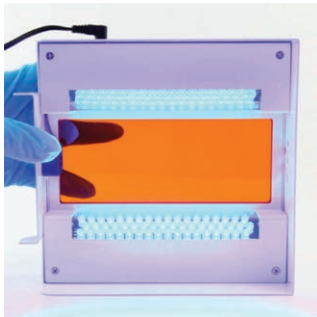
# Electrophoresis

## Mupid® One Electrophoresis

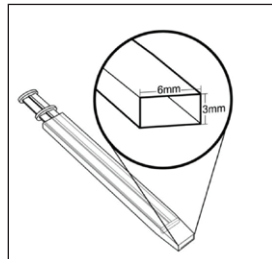
For agarose gels. Easy disposal of the running buffer.  
All accessories are included such as power supply, gel trays, combs.  
No extra costs.



MU2



MU4



FG-830

## Mupid-One LED Illuminator

LED Illuminator for direct monitoring. DNA/RNA electrophoresis under „real time“ conditions

## FastGene Agarose Gel Band Cutter

Easily excise DNA bands. No razor blades necessary.

### ORDERING INFORMATION

- MU2 Mupid-One Electrophoresis System
- MU4 Mupid-One LED Illuminator
- FG-830 FastGene Agarose Gel Band Cutter (50)



## Agarose for DNA/RNA Electrophoresis

**Molecular biology grade agarose** is easy to dissolve and enables a rapid gelling. The purity of the agarose leads to an excellent transparency and a low background. **DNase/RNase free.**

### ORDERING INFORMATION

- BIO-41025 Bioline Agarose (500 g)
- AG02 FastGene Agarose (500 g)

## NEW! Agarose Tablets with DNA stain (and buffer)

- AG09 Midori Green Advance TBE Agarose Tablets (75)
- AG10 Midori Green Advance TAE Agarose Tablets (75)
- AG11 Midori Green Advance Agarose Tablets (100)
- AG12 Midori Green Xtra Agarose Tablets (100)
- AG13 Midori Green Xtra TAE Agarose Tablets (100)



## FastGene DNA Ladders

**For DNA/RNA Electrophoresis. Dyes for easy tracking.**

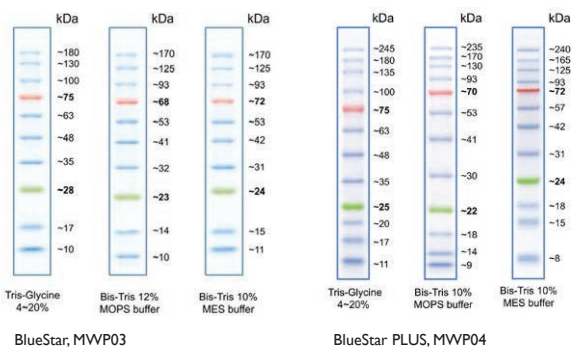
### ORDERING INFORMATION

- MWD50 50bp ladder (50 µg/500 µl)
- MWD100 100bp ladder (50 µg/500 µl)
- MWDIP 1kbp ladder (50 µg/500 µl)



# FastGene® BlueStar Protein Markers

Three colour protein standards with 10-12 prestained proteins covering a wide range molecular weights.



BlueStar prestained Protein Marker		
MWVP03	BlueStar	500 ul*
MWVP04	BlueStar PLUS	500 ul*
*) Sufficient for 100 mini gels or 50 large gels		
FastGene PAGE Gel		
PG-S412	10x8, 4-12%, 12well	10 gels
PG-S420	10x8, 4-20%, 12well	10 gels

## NEW! InstantStain™ Coomassie Blue Stain

15 min non-toxic one-step stain.  
Safe to ship, handle and dispose.

Ultrafast 15 minute staining. Simple one step protocol, no destaining needed – simply add to gel and watch bands appear! Safe usage and disposal.

### CUSTOMER COMMENT!

“...It looks like the new stain (InstantStain™) gives sharper bands which is very positive. I'm also very happy for the lower background compared to traditional Coomassie staining where you have to compromise the intensity of the protein bands if you want to get the background lower”.

### ORDERING INFORMATION

INST-IL-181 InstantStain, 1000 ml (sufficient for 40 gels)



## Medicago SmartBuffers for electrophoresis

Tablets or powder **JUST ADD WATER**

Ideal for standardizing electrophoresis methods.

Protein and DNA/RNA electrophoresis, blotting techniques. SmartBuffers are supplied in exactly pre-weighed tablets and pouches with pre-set pH. Ready to use in less than 5 minutes.

### ORDERING INFORMATION:

TBS tablets, pH 7.6 (500 ml/tablet)		
<b>TBS</b>	09-7500-100	TBS tablets, 100 tabl.
<b>TBS</b>	09-7510-100	TBS-Tween™ tablets, 100 tabl.
SDS, TG-SDS		
<b>SDS</b>	09-2026-50	SDS (0.5 g/tablet), 50 tablets
<b>TG-SDS</b>	12-9222-10	TG-SDS, pH 8.3, 1000 ml/10 pouches
<b>TG-SDS</b>	12-9223-10	TG-SDS, pH 8.3, 5000 ml/10 pouches
TAE, Tris-Acetate-EDTA buffer, pH 8.3		
<b>TAE</b>	12-9144-5	TAE 50x, 5 pouches/ 1000 ml each
<b>TAE</b>	12-9145-5	TAE 50x, 5 pouches/ 500 ml each
TBE, Tris-Borate-EDTA buffer, pH 8.3		
<b>TBE</b>	12-9110-10	TBE, 10 pouches/ 1000 ml each
<b>TBE</b>	12-9111-10	TBE 5x, 10 pouches/ 1000 ml each
<b>TBE</b>	12-9112-10	TBE 10x, 10 pouches/1000 ml each
TG, Tris-Glycine buffer, pH 8.3		
<b>TG</b>	12-9122-10	Tris-Glycine buffer, pH 8.3, 1000 ml
<b>TG</b>	12-9123-10	Tris-Glycine buffer, pH 8.3, 5000 ml



Itäinen Pitkäkatu 4 A  
20520 TURKU  
puh. (02) 241 0099  
info@biotop.fi

### Orders, technical support:

Matti Raitio puh. 050-3611 848 matti.rautio@biotop.fi  
Risto Ranta puh. 050-5280 789 risto.ranta@biotop.fi  
City-Lab Oy www.city-lab.fi